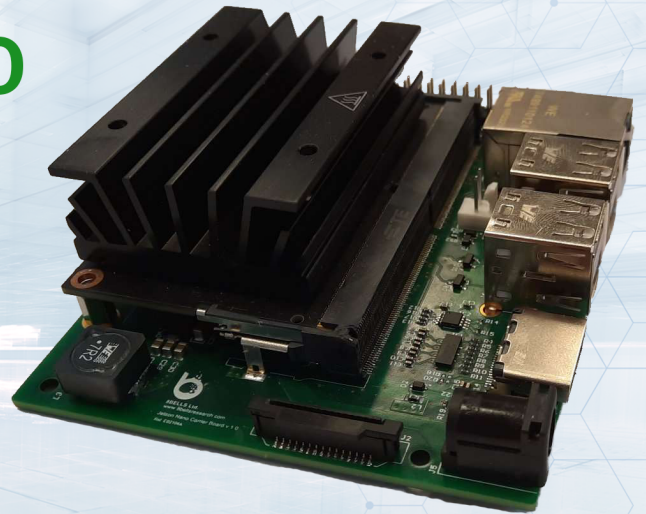


8B EDGECORE-NANO







Fully customizable configuration upon request

The 8B EdgeCore-Nano is a customizable board based on the NVIDIA® Jetson Nano™ System-on-Module (SoM) designed with high quality components and manufactured under strict quality control procedures. It provides easily accessible interfaces for many IoT devices.

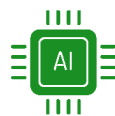
SPECIFICATIONS

General	
AI Performance	472 GFLOPs
GPU	128-core NVIDIA Maxwell™ GPU
CPU	Quad-Core ARM® Cortex®-A57 MPCore processor
Memory	4 GB 64-bit LPDDR4, 25.6GB/s
Storage	16 GB eMMC 5.1
Power	10W max
CSI Camera	Up to 2 cameras, 6 lanes MIPI CSI-2, D-PHY 1.1 (up to 18 Gbps)
Video Encode	1x 4Kp30, 2x1080p60, 4x1080p30, 4x720p60, 9x720p30, (H.265 & H.264)
Video Decode	1x 4K60, 2x 4K30, 4x 1080p60, 8x 1080p30, 9x 720p60, (H.265 & H.264)
Display	HDMI 2.0
Networking	10/100/1000 BASE-T Ethernet, 4G/3G/2G, GNSS
Serial Interfaces	I2C, I2S, SPI, UART
Communications	
Bands	LTE-TDD B34/B38/B39/B40/B41 LTE-FDD B1/B2/B3/B4/B5/B7/B8 /B12/B13/B18/B19/B20/B25/B26 /B28/B66
Data Speed	LTE CAT 4, Uplink ≤ 50 Mbps, Downlink ≤ 150 Mbps
Emmiting Power	0.25W
GNSS	
Receiver type	16-channel, C/A code
Sensitivity	Tracking: -159 dBm (GPS) / -158 dBm (GLONASS) / TBD (BD) Cold starts: -148 dBm
Time-To-First-Fix (open air)	Cold starts: <35s, Hot starts: <1s
Accuracy	Position: <2.5m CEP

INDICATIVE APPLICATIONS

-  Industrial Automation
-  Edge-AI/continual learning
-  Home/Office Automation
-  Robotics

CAPABILITIES



Edge-AI



Secure Communication



AdHoc Network



Remote Monitoring



EIGHT BELLS
Independent Research & Consultancy

A 23 Agias Paraskevis | Strovolos Nicosia, 2002 | Cyprus
T +357 22550056 | E sales@8bellsresearch.com

Copyright © 2022 - EIGHT BELLS Ltd - All rights reserved. www.8bellsresearch.com

*Important Notice: EIGHT BELLS LTD reserves the right to change specification to reflect latest changes in technology and improvements at any time without notice. Export is subject to EU and Member States regulations.